

# 24 APPLGATE DRIVE

ROBBINSVILLE, NEW JERSEY

## ±500,528 SF FOR SUBLEASE

±500,528 SF AVAILABLE

LEASED

**FOREIGN  
TRADE ZONE  
NUMBER 200**

[WWW.24APPLGATEDRIVE.COM](http://WWW.24APPLGATEDRIVE.COM)

**CBRE**

# PROPERTY DETAILS

**±500,528 SF FOR SUBLEASE**

TOTAL BUILDING SIZE	±1,000,749 SF
AVAILABLE SIZE	±500,528 SF
YEAR BUILT	2001
BUILDING DIMENSIONS	1,838' 20" x 541'
OFFICE	±7,769 SF
CLEAR HEIGHT	36'
COLUMN SPACING	40' x 42'

DOCK DOORS	90
DRIVE-IN DOORS	2
CAR PARKING	45
TRAILER PARKING	8
SPRINKLER SYSTEM	ESFR
POWER	5,000 AMPS
FOREIGN TRADE ZONE	NO. 200



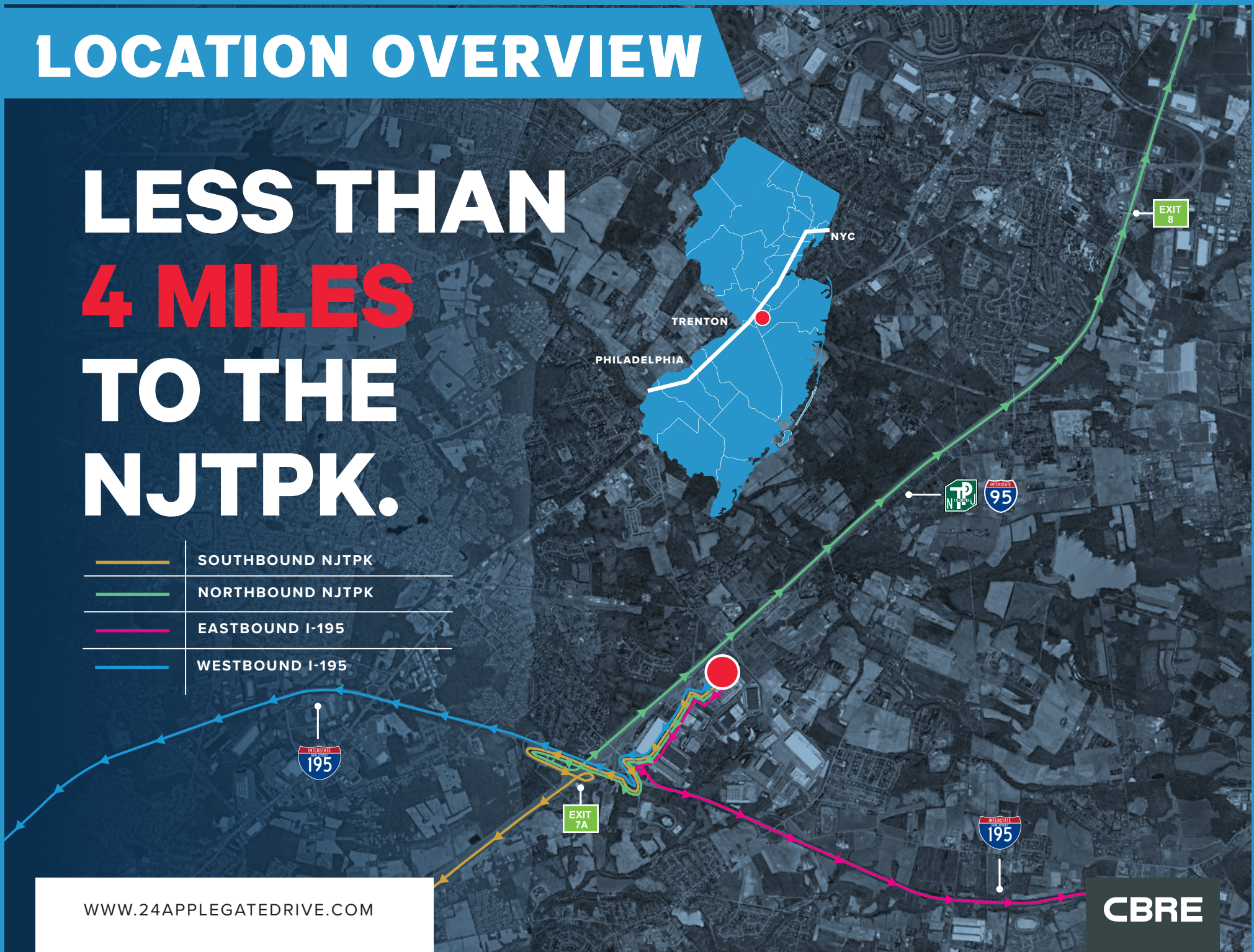
WWW.24APPLEGATEDRIVE.COM

**CBRE**

# LOCATION OVERVIEW

LESS THAN  
**4 MILES**  
TO THE  
NJTPK.

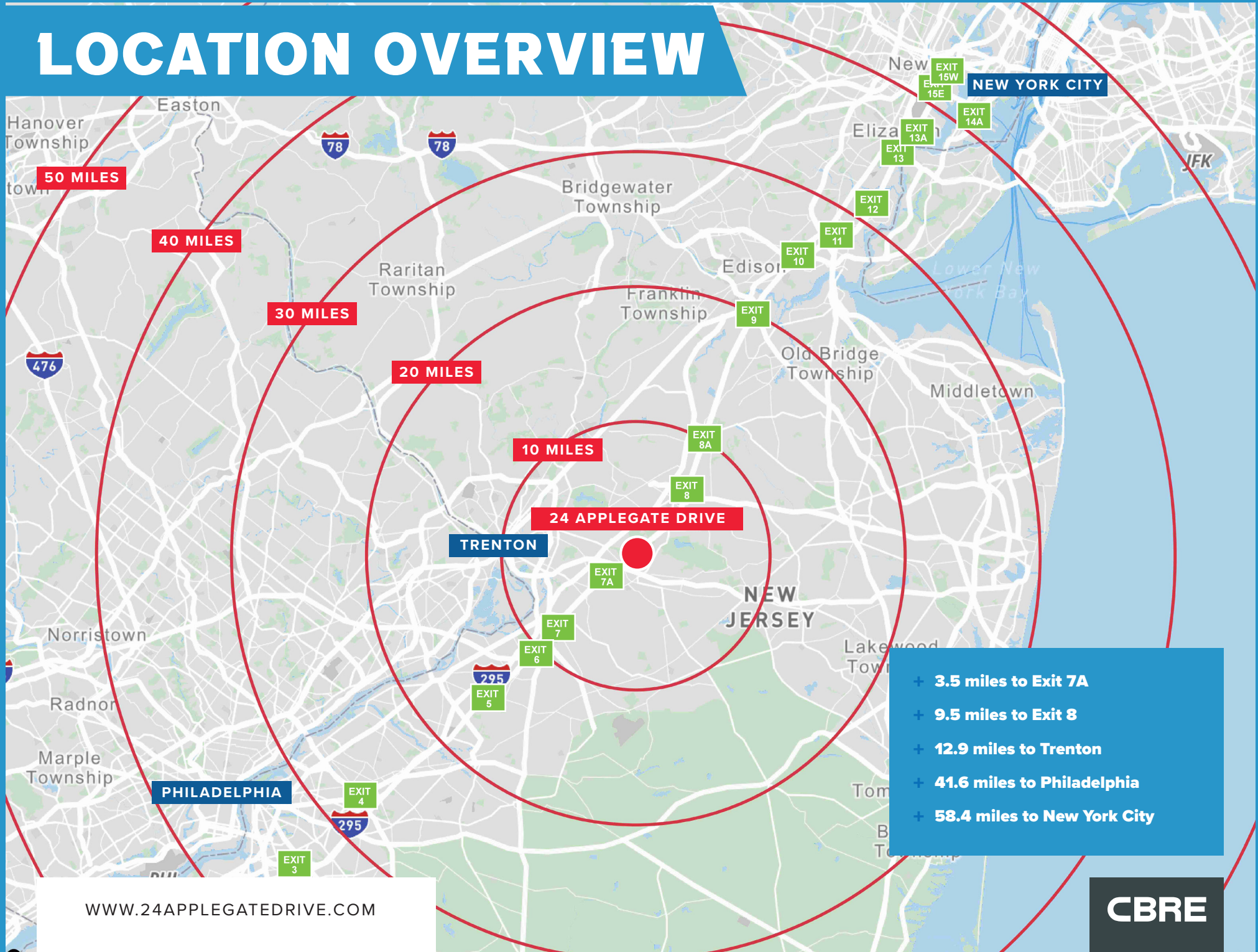
	SOUTHBOUND NJTPK
	NORTHBOUND NJTPK
	EASTBOUND I-195
	WESTBOUND I-195



[WWW.24APPLEGATEDRIVE.COM](http://WWW.24APPLEGATEDRIVE.COM)

**CBRE**

# LOCATION OVERVIEW



[WWW.24APPLEGATEDRIVE.COM](http://WWW.24APPLEGATEDRIVE.COM)

**CBRE**

# 24 APPLGATE DRIVE

WWW.24APPLGATEDRIVE.COM

ROBBINSVILLE, NEW JERSEY

**THOMAS MONAHAN**

VICE CHAIRMAN

+1 201 712 5610

THOMAS.MONAHAN@CBRE.COM

**LARRY SCHIFFENHAUS**

EXECUTIVE VICE PRESIDENT

+1 201 712 5809

LARRY.SCHIFFENHAUS@CBRE.COM

**ANDREW GUNST**

SENIOR ASSOCIATE

+1 201 712 5649

ANDREW.GUNST@CBRE.COM

**FOREIGN  
TRADE ZONE  
NUMBER 200**

**±500,528 SF AVAILABLE**



© 2025 CBRE, Inc. All rights reserved. This information has been obtained from sources believed reliable but has not been verified for accuracy or completeness. CBRE, Inc. makes no guarantee, representation or warranty and accepts no responsibility or liability as to the accuracy, completeness, or reliability of the information contained herein. You should conduct a careful, independent investigation of the property and verify all information. Any reliance on this information is solely at your own risk. CBRE and the CBRE logo are service marks of CBRE, Inc. All other marks displayed on this document are the property of their respective owners, and the use of such marks does not imply any affiliation with or endorsement of CBRE. Photos herein are the property of their respective owners. Use of these images without the express written consent of the owner is prohibited.

**CBRE**